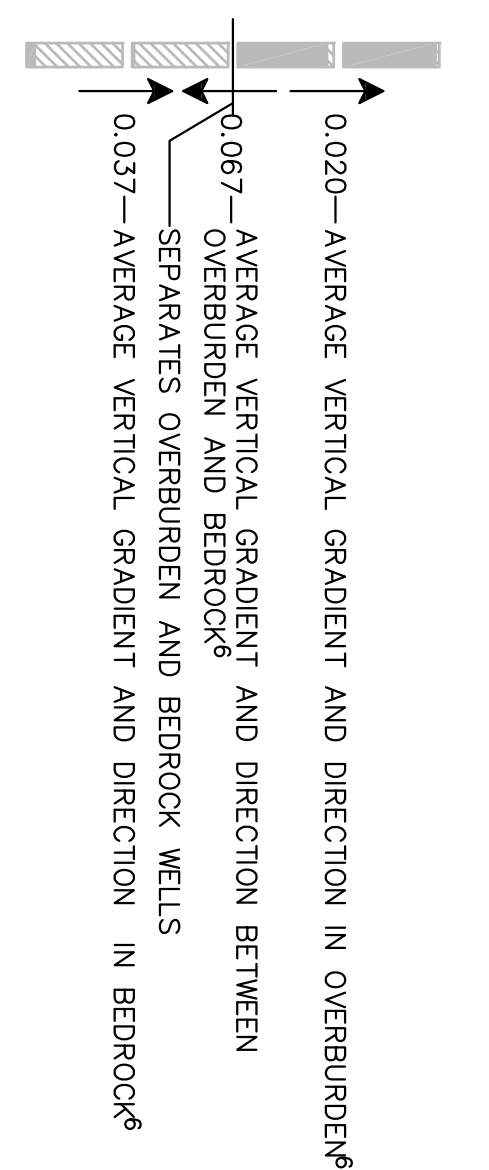
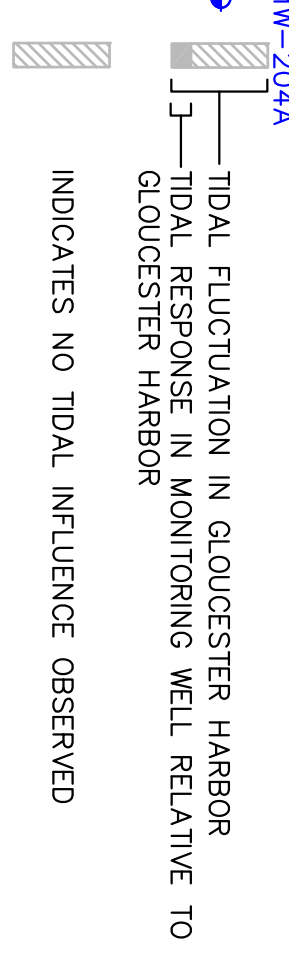


**LEGEND**

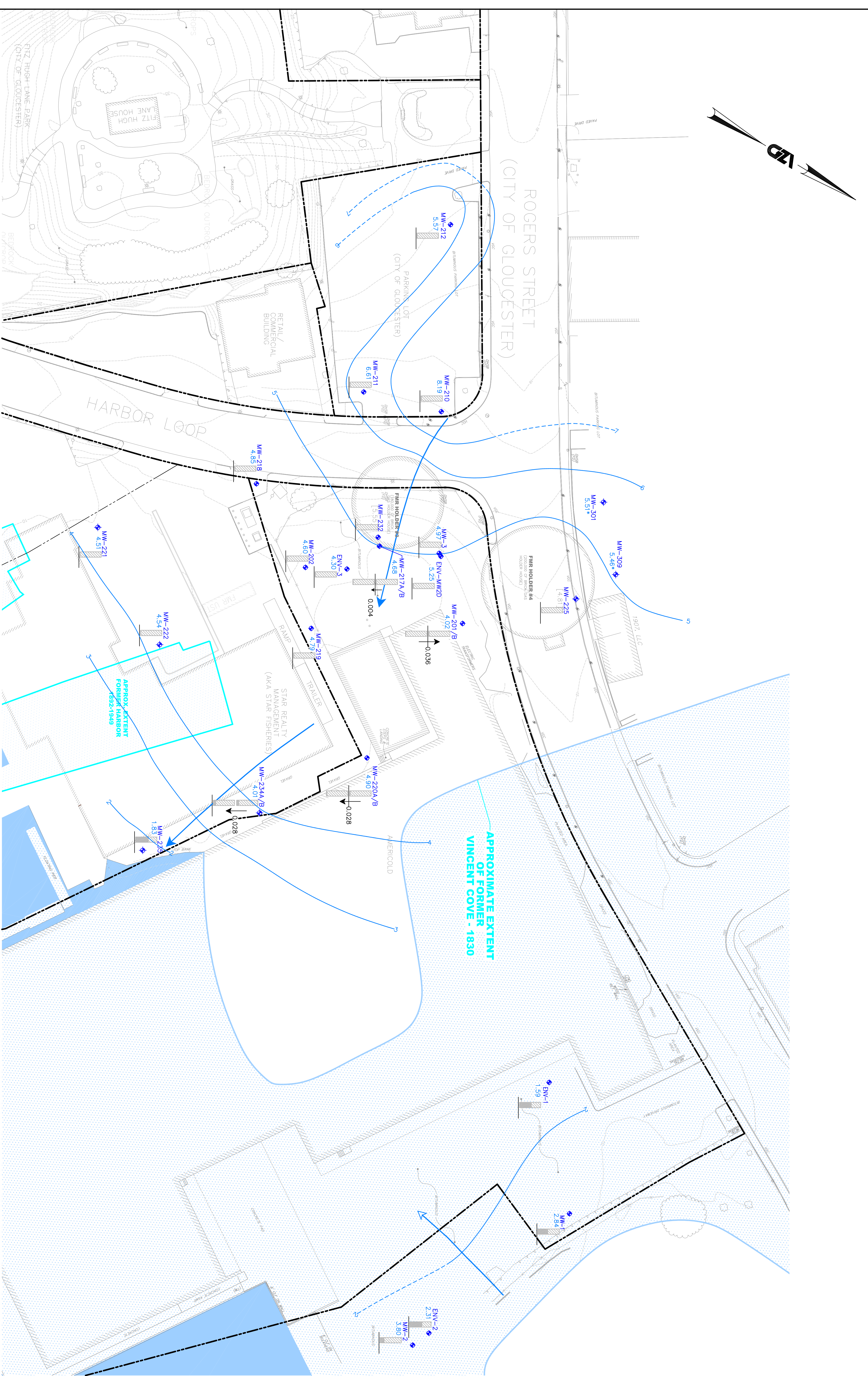
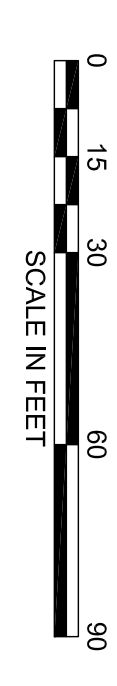
- CHAIN LINK FENCE
- EDGE OF WOODED AREA/PLANTED AREA
- EDGE PAVEMENT
- SEA WALL
- PROPERTY LINE
- ASSESSOR'S LINE
- SURFACE ELEVATION CONTOUR
- INTERPOLATED GROUNDWATER CONTOUR
- EXTRAPOLATED GROUNDWATER CONTOUR
- INDICATES GROUNDWATER FLOW DIRECTION

- MW-1 OVERBURDEN MONITORING WELL LOCATION
- AVERAGE GROUNDWATER ELEVATION IN FEET
- MW-225 MONITORING WELL IN HOUSING DATA NOT USED IN CONTOURING
- MW-220B MONITORING WELL LOCATION
- NO GROUNDWATER ELEVATION DATA
- INDICATES DATA BASED ON HAND-GAUGING IN OCTOBER 2010



**NOTES**

- 1) DRAWING WAS CREATED FROM SURVEY PLAN PROVIDED TO GZA BY HANCOCK ASSOCIATES ENTITLED "EXISTING CONDITIONS PLAN OF LAND IN GLOUCESTER, MA DATED JUNE 17, 2008."
- 2) REFER TO FIGURE 2 FOR SOURCE OF HISTORICAL SITE FEATURE INFORMATION.
- 3) ELEVATIONS SHOWN HEREON REFER TO THE NATIONAL GEODETIC VERTICAL DATUM OF 1929.
- 4) GROUNDWATER ELEVATION CONTOURS DERIVED WERE INFERRED BASED ON SPACED DATA POINTS. ALTERNATE INTERPRETATIONS ARE POSSIBLE.
- 5) GROUNDWATER CONTOURS REPRESENT AVERAGE OF HIGHEST AND LOWEST TRANSDUCER ELEVATION TAKEN OVER TIDAL CYCLE ON 10/19/2010.
- 6) VERTICAL GRADIENT CALCULATED AS:  
(GROUNDWATER ELEVATION IN SHALLOW WELL - GROUNDWATER ELEVATION IN DEEP WELL) / (DEPTH TO SATURATED SCREENED WIDENING OF SHALLOW WELL - DEPTH TO SCREENED WIDENING OF DEEP WELL)



FORMER GLOUCESTER GAS LIGHT COMPANY MGP FACILITY NORTHEN AREA OVERBURDEN WELLS OCTOBER 2010

nationalgrid

PROJECT NO.	190102028231.00	DATE	JULY 2011
PROJECT NAME	FORMER GLOUCESTER GAS LIGHT COMPANY MGP FACILITY NORTHEN AREA OVERBURDEN WELLS	SCALE	AS NOTED
DESIGNED BY	JFC	CHECKED BY	AS NOTED
PROJECT NO.	190102028231.00	SCALE	AS NOTED
DESIGNED BY	JFC	CHECKED BY	AS NOTED
PROJECT NO.	190102028231.00	SCALE	AS NOTED
DESIGNED BY	JFC	CHECKED BY	AS NOTED